



Christopher Trucillo
Chief
NJ Transit Police

UNCLASSIFIED // FOR OFFICIAL USE ONLY

**New Jersey Transit Police Department
Intelligence Section**



Release Date: 01/13/2016
IU2016-015

EMPLOYEE AWARENESS BULLETIN

Suspicious Package Indicators on Mass Transit

NJ TRANSIT employees are a critical factor in observing and reporting potentially suspicious incidents that could impact New Jersey's state-wide mass transit network. Though unattended bags are not unusual in a mass transit environment, employees must remain aware and vigilant at all times for suspicious activity. Please utilize the following information as a reference while working or traveling on the system:

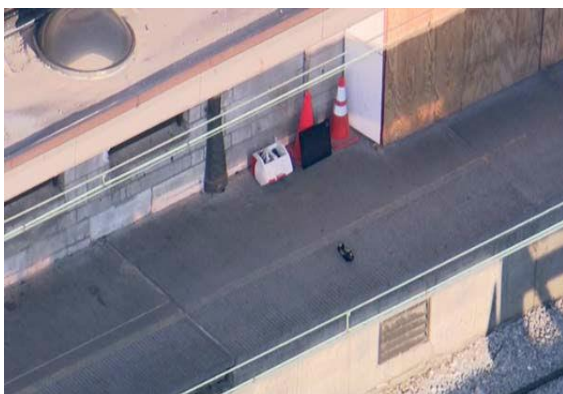
Indicators of Suspicious Items:

- Concealment of backpacks, suitcases or other packages in areas not normally occupied by passengers or employees
- Backpacks with visible wires or excessive bulkiness or individuals who appear weighted down by the size of their backpack
- A package emitting strange odors, exhibits discolorations or is leaking
- Packages or containers (coolers, suitcases, briefcases, backpacks, etc.) seemingly left onboard vehicles and at stations intentionally, specifically those hidden below seats or benches

What to do if you find a Suspicious Item:

- Do not handle it, touch it, or open it
- Isolate other employees and customers from the package
- Contact the NJ TRANSIT Police Department immediately

**CALL THE NJTPD at 973-378-6565 or 1-888-TIPS-NJT (888-847-7658)
or TEXT "NJTPD"**



UNCLASSIFIED//FOR OFFICIAL USE ONLY - (U//FOUO)

(U) Warning: This document is Unclassified//For Official Use Only (U//FOUO). It contains information that may be exempt from public release under the Freedom of Information Act (5 U.S.C. 552). This document should not be distributed beyond those with a valid need to know as determined by NJTPD. For questions regarding this information, please contact the NJTPD Intelligence Section at 973-491-7564 or PoliceIntelligence@njtransit.com.